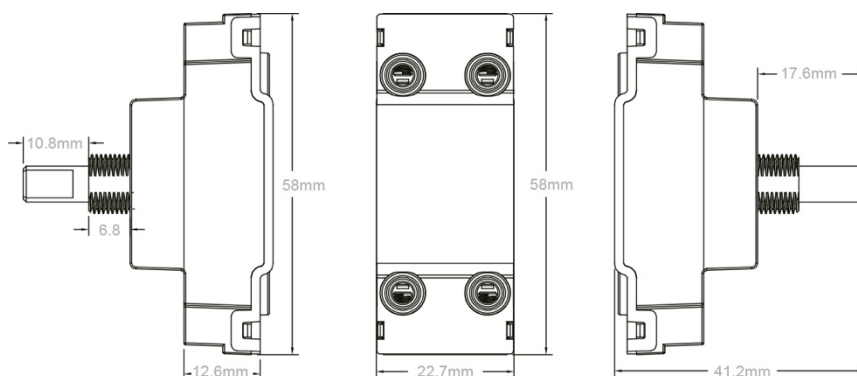
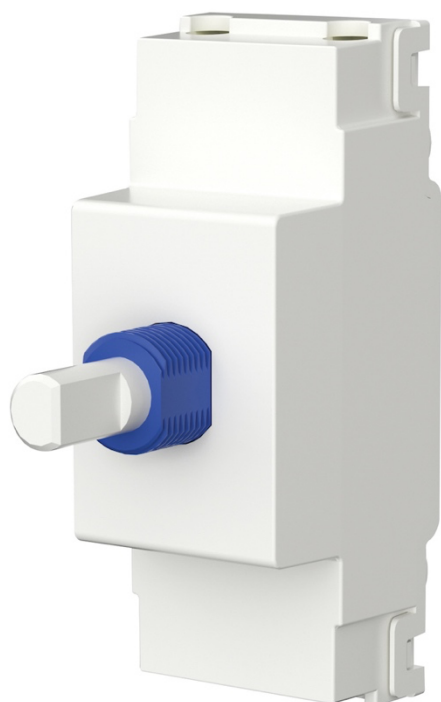


Data Sheet:  
**SL-300DD**



<b>Code:</b>	SL-300DD
<b>Description:</b>	6A Intermediate Dummy Dimmer Module - 3 Way
<b>Range:</b>	Selectric Square
<b>Colour:</b>	White
<b>Ingress Protection:</b>	IP20
<b>Material:</b>	Polycarbonate
<b>Included:</b>	Screws, nut & dimmer adaptor tool
<b>Weight:</b>	0.023kg
<b>Inner Carton Quantity:</b>	10
<b>Inner Carton Weight:</b>	0.23kg
<b>Guarantee:</b>	5 Years
<b>Barcode:</b>	5025117026854
<b>Commodity Code:</b>	85369085
<b>Standards:</b>	BS EN 60669-1
<b>Packaging:</b>	Poly Bag with Euro Slot
<b>Notes:</b>	<ul style="list-style-type: none"> <li>• Fits most empty dimmer plates</li> <li>• Allows you to keep the same appearance of dimmer switches but function as push on/off switches</li> <li>• 6A for resistive load, 1000W for LED load</li> <li>• Also compatible with the GRID360 range</li> <li>• Minimum back box size required: 25mm depth</li> </ul>



Selectric reserves the right to withdraw, improve, or modify any design without prior notification.  
Selectric cannot be held responsible for the incorrect application / installation of any product.