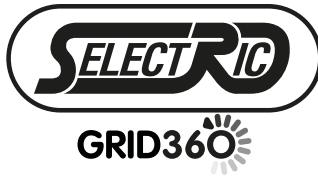


SGRID360-337 SGRID360-346
SGRID360-340 SGRID360-348
SGRID360-342
SGRID360-343
SGRID360-344
SGRID360-345



Grid Module Cover Plates

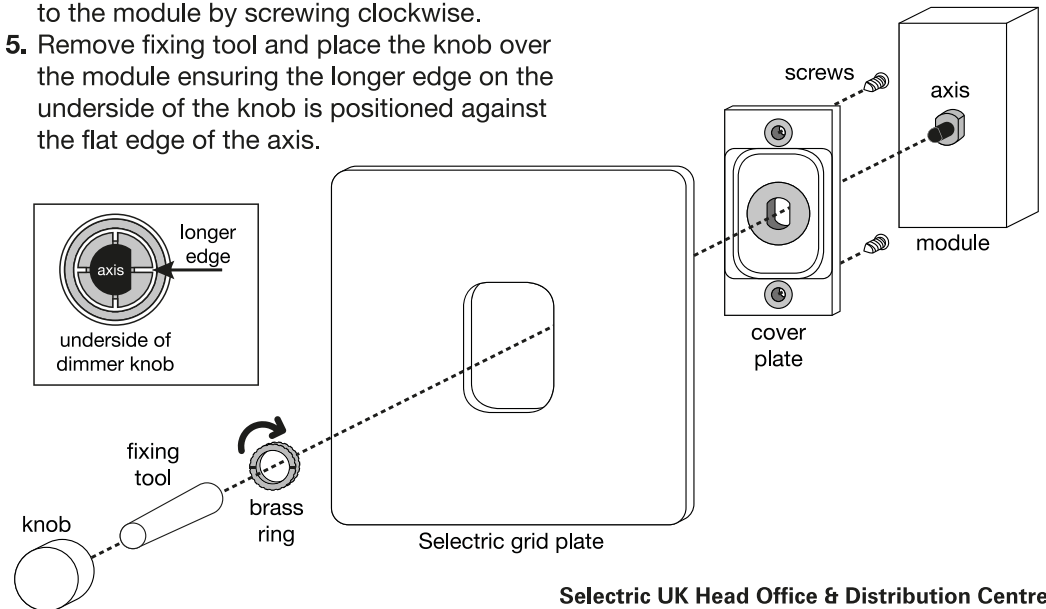
with knob, fixing tool washer & nut

Product Specification:

1. Suitable for use with Selectric dimmer modules SGRID360-335 and SGRID360-336
2. Grid module cover plates only suitable for use with Selectric GRID360 grid plates

Fixing the Cover Plate:

1. Screw the cover plate to the Selectric grid plate
2. Place module behind the cover plate.
3. Place the brass ring over the cover plate hole.
4. Using the fixing tool, tighten the brass ring to the module by screwing clockwise.
5. Remove fixing tool and place the knob over the module ensuring the longer edge on the underside of the knob is positioned against the flat edge of the axis.



Selectric UK Head Office & Distribution Centre

LGA Europe Limited, Cow Lane
Oldfield Road, Salford
Manchester, M5 4NB, England
www.selectricuk.co.uk



SAFETY FIRST

- BEFORE STARTING ANY ELECTRICAL WORK ALWAYS SWITCH OFF AT THE MAINS
- IF IN DOUBT CONSULT A QUALIFIED ELECTRICIAN